



A Infants/ Toddler Group (Under 36 Months)

12 Children

B Childcare Group (30 Months to School Age)

16 Children

Washroom + Fixture Count (Lower Floor Only)

Staff Washrooms

Shared washrooms on this level (2 handicapped accessible washrooms off main corridor); 2 toilet, 2 sinks

Child's Washrooms

Fixtures
(one toilet and one washbasin per 10 children)

Infants – Toddler Area

Toilets	Hand Sinks	Change Table
2	2	1

Childcare

Toilets	Hand sinks	Change Table
2	2	1

Laundry

Washer, Dryer, laundry sink in counter

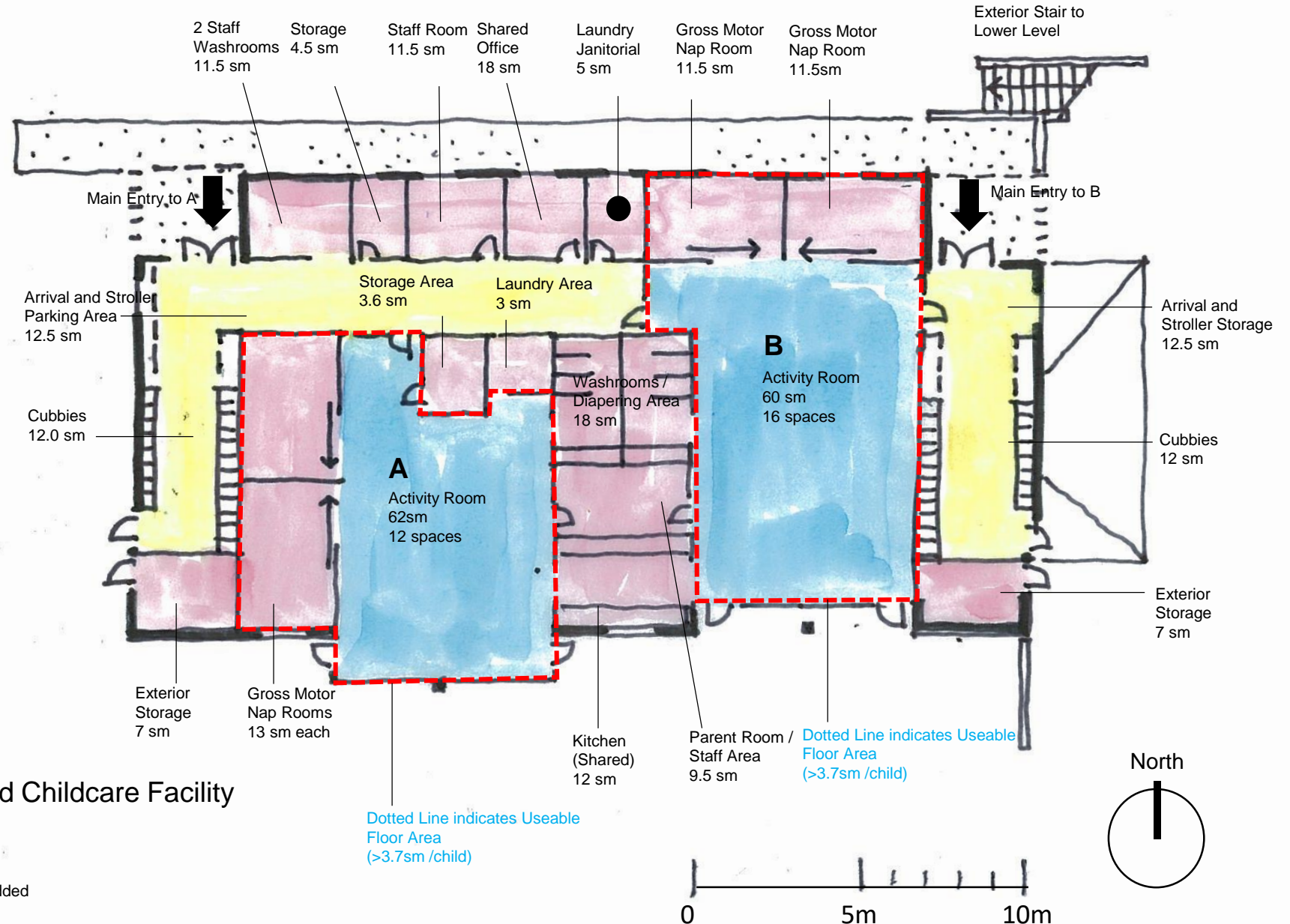
Food Prep Area (Kitchen)

2 sinks, 1 dishwasher

Brentwood College - Proposed Childcare Facility Main Floor Plan

3 February 2020

Revision: Areas added in sm; Washroom Counts added



C Group Child Care (30 Months to School Age) 16 Children

Washroom + Fixture Count (Lower Floor Only)

Staff Washrooms

Are located on the Upper floor next to the Staff Room. If it is necessary operationally to have a staff washroom at this level, it could be added to provide 1 toilet and 1 hand sink

Child's Washrooms

Fixtures

(one toilet and one washbasin per 10 children)

Childcare

Toilets	Hand Sinks	Change Table
2	2	1

Laundry

Washer / dryer / laundry sink in counter

Brentwood College - Proposed Childcare Facility Lower Floor Plan

3 February 2020

Revision: Areas added in sm; Washroom Counts added

